

# DOUBLE RRU SUPPORT

ONLY FITS  
ERICSSON EQUIPMENT

FITS ERICSSON RRU MODELS: RRUW, RRUS 01, RRUS 11

## THE DOUBLE RRU SUPPORT

is designed for installation of 2 RRU units with possibility to attach a PSU on the back.

## FLEXIBILITY

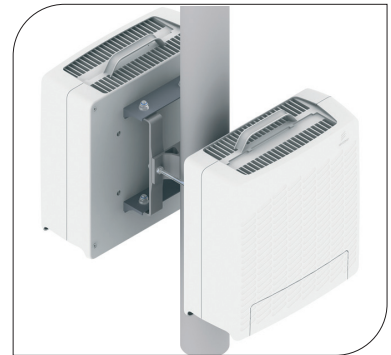
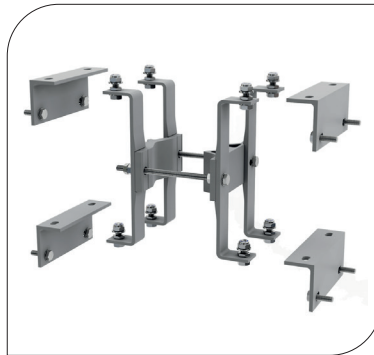
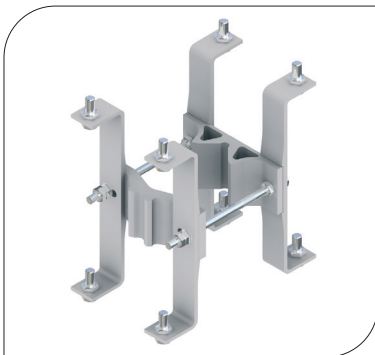
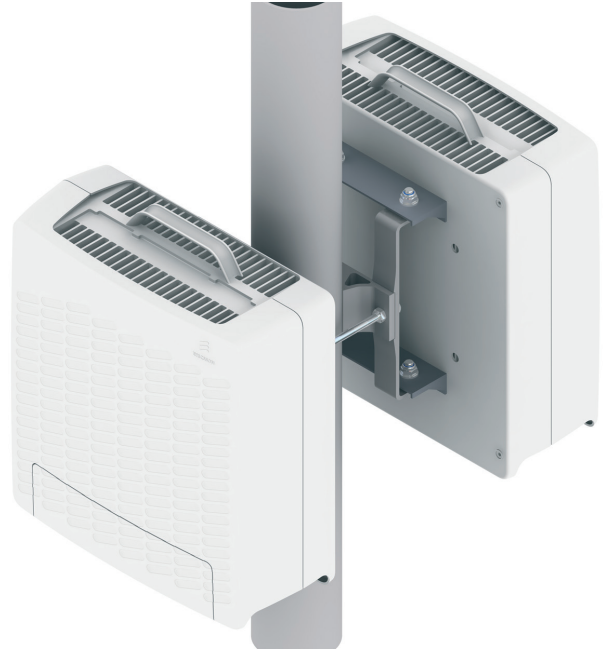
The RRU support can handle a wide range of all common frame leg designs such as round, square, angular, etc.

## QUALITY

All components are made of anodized aluminium and stainless steel which gives the support excellent corrosion resistance.

## EASY ASSEMBLY

The choice of materials makes the product very light which makes the handling and installation very easy.



## ORDER AND TECHNICAL INFORMATION

DRAWING NO: CD 990787

FUNCTION DESCRIPTION: Double RRU support for installation of 2 RRU units with possibility to attach a PSU on the back.

MOUNTING SPAN:	TUBES:	SQUARE PROFILES:	90° ANGLE	60° ANGLE
	○	□	∨	∨
Minimum	Ø25 mm (1,0 in)	35 x 35 mm (1,4 x 1,4 in)	35 x 35 mm (1,4 x 1,4 in)	40 mm (1,6 in) opening
Maximum	Ø120 mm (4,7 in)	90 x 90 mm (3,5 x 3,5 in)	90 x 90 mm (3,5 x 3,5 in)	100 mm (4,0 in) opening
PACKAGE DIMENSIONS:	LENGTH:	WIDTH:	HEIGHT:	WEIGHT:
	290 mm (11,4 in)	124 mm (4,88 in)	122 mm (4,80 in)	5,1 kg (11,24 lb)

NOTE! RRU is not included.